



PERSONS NOT IN THE LABOUR FORCE, AUSTRALIA, MARCH 1986 PRELIMINARY

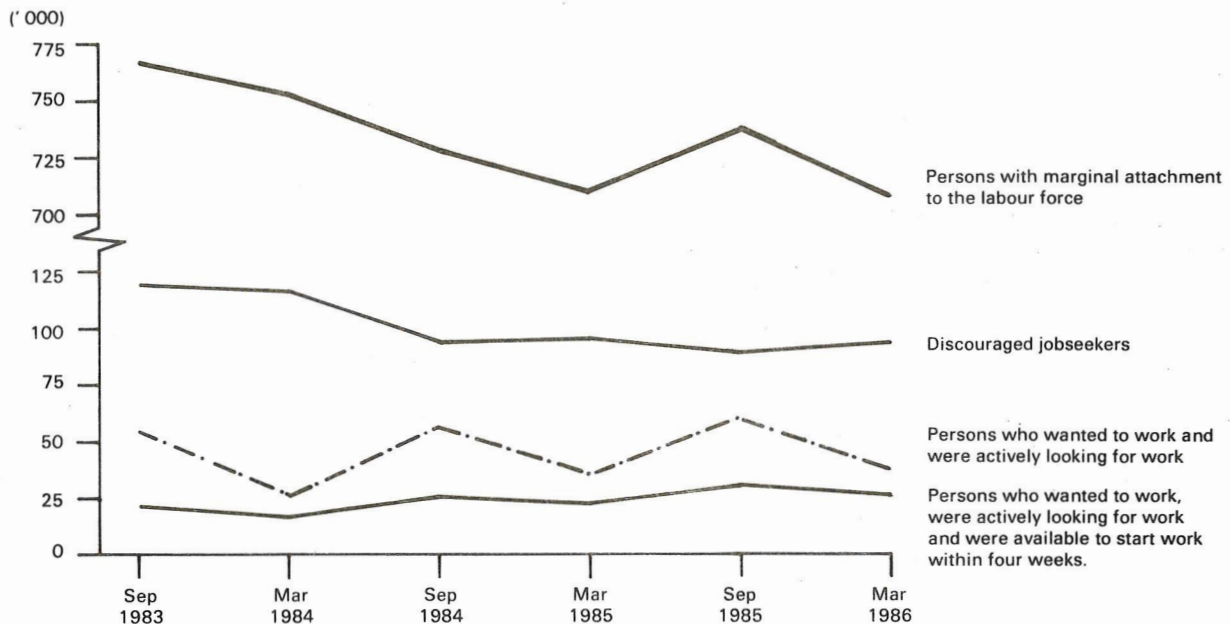
PHONE INQUIRIES *for more information about these statistics*—contact Ms Gail Carters on Canberra (062) 52 6503 or any of our State offices.

other inquiries including copies of publications—contact Information Services on Canberra (062) 52 6627 or in any of our State offices.

MAIL INQUIRIES *write to* Information Services, ABS, P.O. Box 10, Belconnen, A.C.T. 2616 or any of our State offices.

MAIN FEATURES

PERSONS WITH MARGINAL ATTACHMENT TO THE LABOUR FORCE, SEPTEMBER 1983 TO MARCH 1986
(Source of data: Table 1)



In March 1986 37.6 per cent (4,555,100 persons) of the civilian population aged 15 and over was not in the labour force. 15.5 per cent (707,300 persons) of persons not in the labour force were considered to have marginal attachment to the labour force.

Although the number of persons not in the labour force has increased between September 1983 and March 1986, the number of persons with marginal attachment has decreased over the same period.

The majority (77.4 per cent) of persons with marginal attachment to the labour force in March 1986 were females. Of these 54.6 per cent were aged 25 to 44 while only 19.2 per cent of males were in this age group. Almost half (46.8 per cent) of the males were aged 15 to 24.

Only 19.9 per cent of persons who wanted to work but were not actively looking for work and were available to start work within four weeks would prefer to work full-time, compared with 45.7 per cent of persons who wanted to work and were actively looking for work.

The number of discouraged jobseekers (96,800 persons) had decreased from 118,200 in September 1983. The most commonly reported main reason for not actively looking for work by discouraged jobseekers in March 1986 was that they were considered too young or too old by employers (38.8 per cent). Only 13.8 per cent of discouraged jobseekers reported that there were no jobs at all, while it was one of the most commonly reported main reasons for not actively looking for work amongst such persons in September 1983 (reported by 33.6 per cent).

Of the 261,400 persons who wanted to work but were not actively looking for work and were not available to start work within the next four weeks, only 65,800 (25.2 per cent) reported that they intended to look for work in the next twelve months. A further 44,800 (17.1 per cent) reported that they might do so.

Note: Survey estimates are subject to sampling variability, as explained in paragraph 22 following.

EXPLANATORY NOTES

Introduction

The monthly Population Survey (which is described in *The Labour Force, Australia* (6203.0)) comprises the monthly labour force survey and supplementary topics. This publication contains some results of a supplementary survey run in association with the March 1986 labour force survey conducted throughout Australia.

2. Of the respondents to the labour force survey, those who fell within the scope of the supplementary survey were asked additional questions. This subset of respondents was asked about their labour force aspirations and, if appropriate, their reasons for not actively looking for work and their availability for work.

Scope

3. The scope of this supplementary survey was the same as that used for the labour force survey (described in full in *The Labour Force, Australia* (6203.0)) except that it was restricted to persons not in the labour force.

Definitions

4. Persons not in the labour force are by definition those persons who do not meet the criteria that would enable them to be classified as being in the labour force. To be classified as being in the labour force, a person must be aged 15 or over and be either *employed* or *unemployed*.

5. *Persons not in the labour force*, therefore, include all persons aged 15 and over who are not employed, who want to work but do not meet the criteria to be classified as unemployed; who do not want to work; or who through incapacity or infirmity cannot work.

6. The criteria determining those in the labour force are based on actual activity (i.e. working or looking for work) during the survey week. The criteria associated with marginal attachment to the labour force, in particular the concepts of wanting to work, reasons for not actively looking for work and availability to start work, are more subjective and are not based on respondents' actual activity. Hence, the measurement of these criteria is affected by the respondents' own interpretation of the concepts used. Individual respondent's interpretation is affected by such factors as the respondent's work aspirations, as well as family, economic and other commitments.

7. *Persons with marginal attachment to the labour force* are those who were not in the labour force in the survey week, wanted to work and:

- (a) were actively looking for work but do not meet the criteria to be classified as unemployed; or
- (b) were not actively looking for work but were available to start work within four weeks.

8. *Persons not in the labour force who wanted to work* are those who:

- (a) in the four weeks up to the end of the survey week had taken *active steps* to find work but do not meet the criteria to be classified as unemployed; or

(b) although claiming to have looked for work in the four weeks up to the end of the survey week, had not taken *active steps* to find work; or

(c) in the four weeks up to the end of the survey week had not looked for work but in the survey answered 'yes' or 'maybe' to the question '*Even though you have not been looking for work would you like a full-time or part-time job?*'.

9. *Discouraged jobseekers* are those persons with marginal attachment to the labour force who wanted to work and were available to start work within four weeks but whose main reason for not taking active steps to find work was that they believed they would not be able to find a job for any of the following reasons: considered to be too young or too old by employers; difficulties with language or ethnic background; lacked the necessary schooling, training, skills or experience; no jobs in their locality or line of work; or no jobs at all.

10. *Active steps taken to find work* comprise writing, telephoning or applying in person to an employer for work; answering a newspaper advertisement; checking factory or Commonwealth Employment Service noticeboards; being registered with the Commonwealth Employment Service; checking or registering with any other employment agency; advertising or tendering for work; and contacting friends or relatives.

11. A *job* is any paid employment, full-time or part-time, lasting two weeks or more.

12. Unless otherwise stated, all characteristics referenced in this publication are as at the survey week.

13. Further definitions of labour force and demographic classifications appearing in this publication are given in *The Labour Force, Australia* (6203.0)

14. The various groups of persons either in the labour force or not in the labour force, including those marginally attached to the labour force, are shown schematically in the diagram on the following page.

Results of the survey

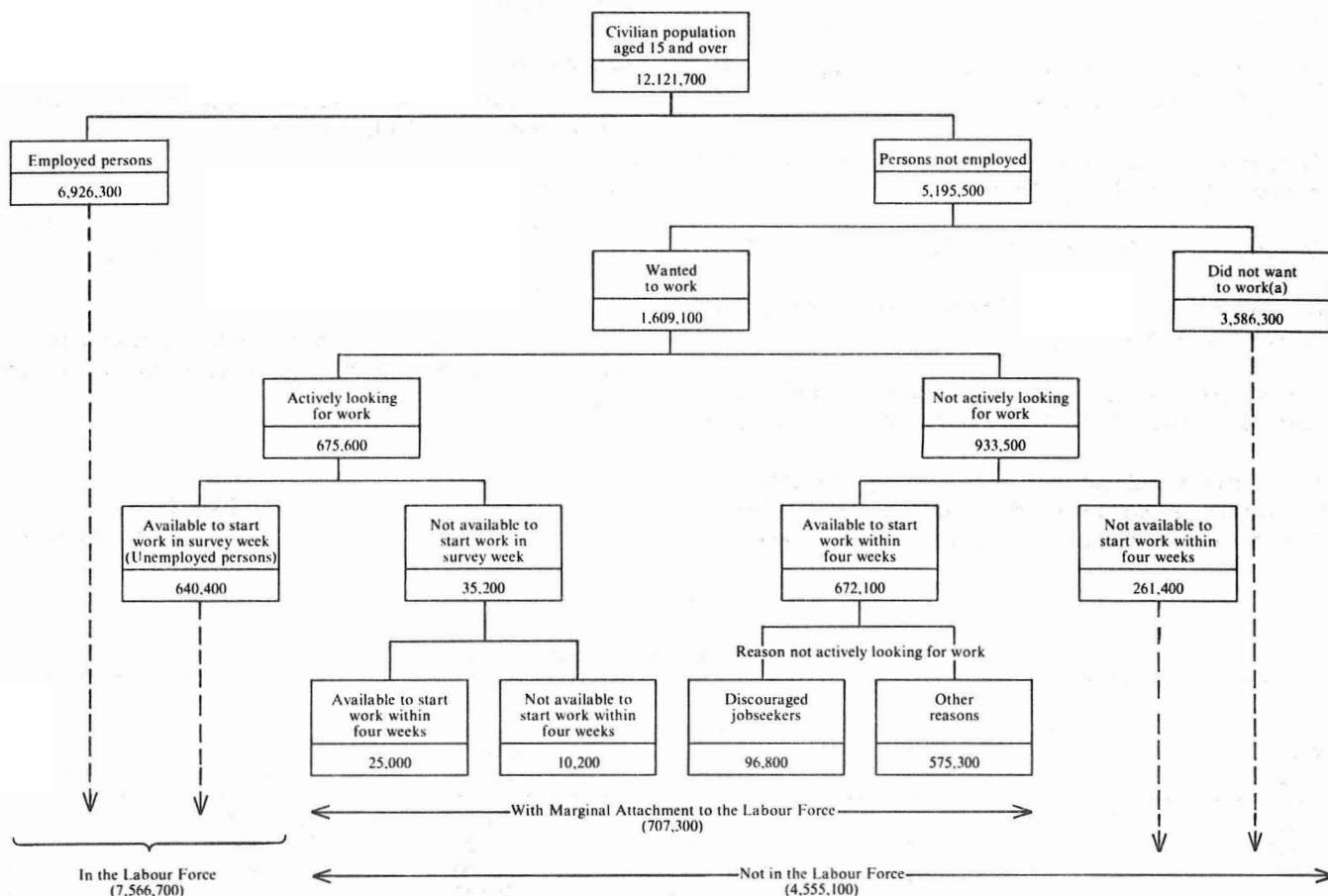
15. Estimates of persons not in the labour force are also published in *The Labour Force, Australia* (6203.0). However, more detailed information is contained in this publication.

16. Due to differences in the method of estimation used in this supplementary survey and that used in the Labour Force Survey, there are some small variations between estimates in this publication and those in the March issue of *The Labour Force, Australia* (6203.0).

17. The estimates in this publication refer to information collected in the survey month and, due to seasonal factors, may not be representative of other months of the year.

18. This publication contains only a summary of the results of the survey. Estimates shown are preliminary and may be revised. A more detailed publication will be released as soon as possible, and further information is available on request.

RELATIONSHIP OF PERSONS WITH MARGINAL ATTACHMENT TO THE LABOUR FORCE TO PERSONS IN OR NOT IN THE LABOUR FORCE, MARCH 1986



(a) Includes institutionalised, boarding school pupils and persons permanently unable to work.

19. Results of similar surveys, which have been conducted each March and September since March 1979, and also in May 1977 and November 1975, have been published in catalogue 6220.0.

20. It is proposed that this survey will next be conducted in September 1986.

Discontinuities in the series

21. New or amended concepts were introduced in the September 1983 survey, causing a break in series. Refer to the latest issue of catalogue 6220.0 for details.

Reliability of the estimates

22. Estimates in this publication are subject to two sources of error:

- (a) *sampling error*: since the estimates are based on information obtained from occupants of a sample of dwellings, they may differ from the figures that would have been produced if all dwellings had been included in the survey. One measure of the likely difference is given by the *standard*

error. More information about this topic is contained in *The Labour Force, Australia* (6203.0). A table of estimated standard errors for this survey follows these notes. Estimates with a standard error of more than about 25 per cent have not been shown in this publication, as the degree of sampling variability would seriously detract from their value for most reasonable uses. Although figures for these small components can, in some cases, be derived by subtraction they should not be regarded as reliable.

- (b) *non-sampling error*: inaccuracies may occur because of imperfections in reporting by interviewers and respondents and errors made in the coding and processing of data. These inaccuracies may occur in any enumeration, whether it be a full count or only a sample. Every effort is made to reduce the non-sampling error to a minimum by careful design of questionnaires, intensive training and supervision of interviewers and efficient operating procedures.

Related publications

23. Other ABS publications which may be of interest include:

The Labour Force, Australia (6203.0)—issued monthly (\$1.20, \$2.10 incl. postage)

Labour Force Experience, Australia, during the year ending February 1985 (6206.0)

Underemployed Workers, Australia, May 1985 (6265.0)

Job Search Experience of Unemployed Persons, Australia, July 1985 (6222.0)

Employment, Underemployment and Unemployment 1966-1983, Australia (6246.0) (\$1.70, \$2.40 incl. postage)

24. Current publications produced by the ABS are listed in the *Catalogue of Publications, Australia* (1101.0). The ABS also issues, on Tuesdays and Fridays, a

Publications Advice (1105.0) which lists publications to be released in the next few days. The Catalogue and Publications Advice are available from any ABS office.

Statistics on VIATEL

25. Selected economic, social and demographic statistics are available on VIATEL *656 #.

Symbols and other usages

- * subject to sampling variability too high for most practical uses. See paragraph 22 above.
- .. not applicable.

26. Because figures have been rounded, discrepancies may occur between sums of the component items and totals.

IAN CASTLES
Australian Statistician

STANDARD ERRORS OF ESTIMATES

Size of estimate	Number	Relative standard error	Size of estimate	Number	Relative standard error
		(per cent)			(per cent)
4,000	970	24.3	100,000	4,400	4.4
4,500	1,050	23.3	200,000	5,800	2.9
5,000	1,100	22.0	300,000	6,800	2.3
6,000	1,200	20.0	500,000	8,300	1.7
10,000	1,550	15.5	1,000,000	10,700	1.1
20,000	2,150	10.8	2,000,000	13,600	0.7
50,000	3,250	6.5	5,000,000	18,300	0.4

**TABLE 1. CIVILIAN POPULATION AGED 15 AND OVER : LABOUR FORCE STATUS,
SEPTEMBER 1983 TO MARCH 1986
(' 000)**

	Sept. 1983	March 1984	Sept. 1984	March 1985	Sept. 1985	March 1986
Civilian population aged 15 and over	11,585.5	11,718.5	11,808.0	11,897.3	11,998.5	12,121.7
Employed	6,350.0	6,504.2	6,572.9	6,634.5	6,783.9	6,926.3
Unemployed	718.7	701.0	621.3	671.7	587.7	640.4
Persons not in the labour force	4,516.8	4,513.2	4,613.8	4,591.1	4,626.9	4,555.1
With marginal attachment to the labour force	765.6	750.0	726.3	708.3	739.7	707.3
Wanted to work and were actively looking for work	53.8	25.7	56.4	32.1	60.4	35.2
Were available to start work within four weeks	21.9	18.7	26.2	22.2	30.2	25.0
Were not available to start work within four weeks	31.9	7.0	30.2	9.9	30.2	10.2
Wanted to work but were not actively looking for work and were available to start work within four weeks	711.8	724.3	669.9	676.3	679.4	672.1
Discouraged jobseekers	118.2	116.1	93.7	96.0	89.0	96.8
Other	593.6	608.2	576.2	580.3	590.4	575.3
Without marginal attachment to the labour force	3,751.2	3,763.3	3,887.6	3,882.8	3,887.1	3,847.8
Wanted to work but were not actively looking for work and were not available to start work within four weeks	244.2	224.0	264.1	222.7	265.2	261.4
Did not want to work	3,225.4	3,275.2	3,365.6	3,399.1	3,380.1	3,340.8
Permanently unable to work	77.3	52.3	56.5	54.4	47.8	51.1
Institutionalised(a) and boarding school pupils	204.3	211.8	201.4	206.6	194.1	194.4

(a) Includes some patients in hospitals and sanatoria and inmates of reformatories, jails etc.

**TABLE 2. PERSONS NOT IN THE LABOUR FORCE WITH MARGINAL ATTACHMENT TO THE LABOUR FORCE:
MAIN REASON FOR NOT ACTIVELY LOOKING FOR WORK, SEPTEMBER 1983 TO MARCH 1986
(' 000)**

	Sept. 1983	March 1984	Sept. 1984	March 1985	Sept. 1985	March 1986
Wanted to work and were actively looking for work	53.8	25.7	56.4	32.1	60.4	35.2
Were available to start work within four weeks	21.9	18.7	26.2	22.2	30.2	25.0
Were not available to start work within four weeks	31.9	7.0	30.2	9.9	30.2	10.2
Wanted to work but were not actively looking for work and were available to start work within four weeks	711.8	724.3	669.9	676.3	679.4	672.1
Main reason for not actively looking for work						
Had a job to go to	11.4	10.3	8.8	9.1	11.2	11.7
Personal reasons	243.8	265.5	241.8	263.5	256.2	251.0
Own ill health, disability, pregnancy	61.9	62.2	60.6	65.8	69.1	63.0
Attending an educational institution	82.9	104.8	93.4	104.9	102.3	111.1
Had no need to work	50.5	49.5	41.5	44.7	41.3	38.2
Give others a chance	11.2	11.0	9.3	9.1	6.2	4.5
Welfare payments/pension may be affected	22.1	21.7	17.4	24.2	19.6	19.6
Moved house/holidays	15.2	16.3	19.6	14.7	17.8	14.7
Family reasons	277.2	262.5	263.1	238.2	248.4	241.4
Ill health of other than self	13.4	10.1	15.2	11.0	14.8	12.9
Unable to find suitable childcare	222.4	212.1	76.3	73.6	72.5	70.1
Children too young/preferred to look after children			132.9	115.0	126.1	117.5
Other family considerations	41.4	40.3	38.7	38.6	34.9	40.9
Discouraged jobseekers	118.2	116.1	93.7	96.0	89.0	96.8
Considered too young or too old by employers	29.0	34.5	26.9	31.0	32.2	37.6
Difficulties with language or ethnic background	*	*	5.7	4.7	5.0	5.2
Lacked necessary schooling, training, skills or experience	8.4	10.0	8.9	11.2	8.9	11.5
No jobs in locality or line of work	38.2	40.7	29.0	33.0	26.0	29.1
No jobs at all	39.7	27.1	23.2	16.1	16.8	13.4
No jobs in suitable hours	15.1	22.9	19.3	17.7	18.4	17.5
Other reasons	27.2	28.2	29.5	29.7	36.4	34.6
Did not know	8.1	9.5	4.2	10.3	8.0	9.0
Not asked(a)	10.9	9.3	9.5	11.9	12.0	10.1
Total	765.6	750.0	726.3	708.3	739.7	707.3

(a) Persons who had a job but, up to the end of the survey week, had been away from work without pay for four weeks or longer and had not been actively looking for work.

TABLE 3. PERSONS NOT IN THE LABOUR FORCE WITH MARGINAL ATTACHMENT TO THE LABOUR FORCE : SUMMARY OF CHARACTERISTICS, MARCH 1986
(' 000)

	<i>Persons who wanted to work and were actively looking for work</i>		<i>Total</i>	<i>Persons who wanted to work but were not actively looking for work and were available to start work within four weeks</i>			<i>Persons with marginal attachment to the labour force</i>		
	<i>Were available to start work within four weeks</i>	<i>Were not available to start work within four weeks</i>		<i>Discouraged jobseekers</i>	<i>Other</i>	<i>Total</i>	<i>Males</i>	<i>Females</i>	<i>Persons</i>
Age group (years)—									
15-19	*	*	6.9	7.2	117.5	124.7	61.7	69.9	131.6
20-24	5.7	*	8.2	6.0	53.9	60.0	13.1	55.0	68.1
25-34	9.7	*	11.7	12.7	163.2	175.9	17.9	169.8	187.6
35-44	*	*	4.0	18.1	119.7	137.8	12.8	128.9	141.8
45-54	*	*	*	18.4	63.7	82.1	14.2	70.1	84.3
55-59	*	*	*	11.9	25.8	37.7	10.1	28.4	38.5
60-64	*	*	*	7.8	18.2	26.0	13.7	13.6	27.3
65 and over	*	*	*	14.7	13.2	27.9	16.3	11.6	27.9
Family status—									
Member of a family		7.8	28.6	79.1	512.0	591.1	128.0	491.7	619.7
Husband or wife	12.9	*	16.3	59.3	327.1	386.4	53.1	349.7	402.8
With children aged 0-14 present	9.6	*	12.3	22.0	237.5	259.5	15.3	256.5	271.8
Without children aged 0-14 present	*	*	4.1	37.3	89.6	126.9	37.8	93.2	131.0
Not-married family head	*	*	*	9.9	68.6	78.5	5.5	76.1	81.6
With children aged 0-14 present	*	*	*	5.8	59.0	64.8	*	63.8	67.3
Without children aged 0-14 present	*	*	*	4.1	9.6	13.7	*	12.4	14.4
Child of family head	4.9	*	8.1	8.1	110.2	118.3	65.6	60.8	126.4
Other relative of family head	*	*	*	*	6.1	7.9	*	5.1	8.9
Not a member of a family	*	*	*	12.3	32.8	45.1	19.6	29.2	48.8
Living alone	*	*	*	10.4	18.3	28.7	10.8	19.2	30.0
Not living alone	*	*	*	*	14.5	16.4	8.8	10.0	18.9
Not family coded	*	*	*	5.4	30.5	35.9	12.3	26.4	38.7
Type of work preferred—									
Full-time	10.8	5.3	16.1	23.4	110.4	133.8	72.4	77.5	149.9
Part-time	13.8	4.4	18.3	66.9	446.5	513.3	80.5	451.1	531.6
No preference	*	*	*	6.5	18.4	24.9	6.9	18.8	25.8
Whether looked for work in the last 12 months (a)—									
Had looked for work	25.0	10.2	35.2	33.6	119.6	153.2	59.5	128.9	188.4
Less than 5 weeks ago	25.0	10.2	35.2	12.1	31.7	43.7	26.1	52.8	78.9
5 and less than 8 weeks ago	6.5	36.3	42.8	13.1	29.7	42.8
8 and less than 13 weeks ago	5.9	24.0	29.9	10.4	19.5	29.9
13 to 52 weeks ago	9.2	27.6	36.8	9.9	26.9	36.8
Had not looked for work	63.3	455.6	518.9	100.3	418.5	518.9
Time since last job—									
Had had a job	22.9	8.0	30.9	85.7	479.9	565.6	115.3	481.2	596.5
Under 12 months	13.0	4.3	17.3	14.2	128.1	142.3	54.1	105.5	159.6
Under 6 months	9.0	*	10.6	7.3	92.7	100.0	41.3	69.4	110.7
6 and under 12 months	4.1	*	6.7	6.9	35.4	42.2	12.9	36.1	48.9
1 and under 3 years	*	*	5.2	13.2	93.5	106.7	22.8	89.1	111.9
3 and under 5 years	*	*	*	13.1	69.0	82.0	14.4	71.0	85.4
5 and under 10 years	4.0	*	4.3	20.6	97.0	117.6	16.0	105.9	121.9
10 and under 20 years	*	*	*	15.9	72.3	88.1	7.2	81.5	88.7
20 years or more	*	*	*	8.8	20.0	28.8	*	28.2	29.0
Had never had a job	*	*	4.3	11.1	95.4	106.5	44.6	66.2	110.8
Reason for leaving last job—									
Retrenched/made redundant/lost job	4.5	*	5.6	17.7	47.1	64.8	22.4	48.1	70.4
Seasonal or temporary job	*	*	5.0	9.5	53.2	62.7	13.4	54.3	67.6
Returned to studies	*	*	*	*	21.8	22.2	12.6	12.2	24.8
Retired/did not want to work any longer	*	*	*	9.5	25.9	35.4	14.2	21.5	35.7
Unsatisfactory work arrangements	*	*	*	6.3	23.7	30.0	8.6	24.3	32.8
Own ill health or injury	*	*	*	6.4	45.5	51.9	22.4	32.2	54.5
To get married	*	*	*	7.9	30.2	38.1	*	38.8	38.8
Pregnancy/to have children	*	*	4.5	8.4	127.1	135.5	*	140.0	140.0
To look after family, house or someone else	*	*	*	4.3	31.1	35.5	*	33.2	36.4
Travelled, moved house, spouse transferred	*	*	4.3	9.4	40.9	50.3	6.9	47.5	54.5
Sold business/farm	*	*	*	4.9	9.2	14.1	4.5	10.3	14.8
Other reasons	*	*	*	*	14.1	15.2	*	12.2	16.0
Had never had a job	*	*	4.3	11.1	95.4	106.5	44.6	66.2	110.8
Not asked(b)	10.1	10.1	*	6.7	10.1
Total	25.0	10.2	35.2	96.8	575.3	672.1	159.9	547.4	707.3

(a) Persons who had left a job in the last twelve months were only asked whether they had looked for work since that job. (b) Persons who had a job but, up to the end of survey week, had been away from work without pay for four weeks or longer and had not been actively looking for work.

TABLE 4. PERSONS NOT IN THE LABOUR FORCE WITH MARGINAL ATTACHMENT TO THE LABOUR FORCE: MAIN REASON FOR NOT ACTIVELY LOOKING FOR WORK, INTENTION TO LOOK FOR WORK IN THE NEXT TWELVE MONTHS AND TYPE OF WORK PREFERRED, MARCH 1986 ('000)

	<i>Intention to look for work in the next twelve months</i>					<i>Type of work preferred</i>			<i>Total</i>
	<i>Intended to look</i>	<i>Might look</i>	<i>Would not look</i>	<i>Did not know</i>	<i>Not asked(a)</i>	<i>Full-time</i>	<i>Part-time</i>	<i>No preference</i>	
Wanted to work and were actively looking for work	35.2	16.1	18.3	*	35.2
Were available to start work within four weeks	25.0	10.8	13.8	*	25.0
Were not available to start work within four weeks	10.2	5.3	4.4	*	10.2
Wanted to work but were not actively looking for work and were available to start work within four weeks	279.6	125.1	213.4	32.3	21.8	133.8	513.3	24.9	672.1
<i>Main reason for not actively looking for work</i>									
Had a job to go to	11.7	4.9	6.6	*	11.7
Personal reasons	125.8	43.7	71.3	10.2	..	64.2	180.5	6.3	251.0
Own ill health, disability, pregnancy	24.8	14.3	20.3	*	..	16.6	42.9	*	63.0
Attending an educational institution	74.1	14.1	20.3	*	..	35.9	74.4	*	111.1
Had no need to work	10.8	6.9	18.9	*	..	*	35.5	*	38.2
Give others a chance	*	*	*	*	..	*	*	*	4.5
Welfare payments/pension may be affected	*	6.3	8.4	*	..	*	15.6	*	19.6
Moved house/holidays	13.2	*	*	*	..	5.8	8.7	*	14.7
Family reasons	76.2	52.7	99.1	13.3	..	25.3	208.3	7.8	241.4
Ill health of other than self	4.0	4.6	*	*	..	*	10.1	*	12.9
Unable to find suitable childcare	18.6	12.3	35.9	*	..	7.7	59.7	*	70.1
Children too young/preferred to look after children	38.5	27.0	45.5	6.5	..	11.3	102.7	*	117.5
Other family considerations	15.1	8.9	14.4	*	..	*	35.9	*	40.9
Discouraged jobseekers	43.3	16.4	31.8	5.4	..	23.4	66.9	6.5	96.8
Considered too young or too old by employers	10.7	7.0	18.8	*	..	7.5	27.3	*	37.6
Difficulties with language or ethnic background	*	*	*	*	..	*	*	*	5.2
Lacked necessary schooling, training, skills or experience	5.0	*	*	*	..	*	7.8	*	11.5
No jobs in locality or line of work	15.4	6.0	6.1	*	..	7.1	19.7	*	29.1
No jobs at all	8.7	*	*	*	..	*	9.5	*	13.4
No jobs in suitable hours	9.1	4.4	*	*	..	*	16.6	*	17.5
Other reasons	21.9	5.8	5.7	*	..	9.9	22.2	*	34.6
Did not know	*	*	*	*	..	*	6.9	*	9.0
Not asked(b)	10.1	*	5.3	*	10.1
Total	279.6	125.1	213.4	32.3	56.9	149.9	531.6	25.8	707.3

(a) Comprises persons who had a job to go to, persons who took active steps to find work and persons as defined in footnote(b). (b) Persons who had a job but, up to the end of the survey week, had been away from work without pay for four weeks or longer and had not been actively looking for work.

TABLE 5. PERSONS NOT IN THE LABOUR FORCE WHO WANTED TO WORK BUT WERE NOT ACTIVELY LOOKING FOR WORK AND WERE NOT AVAILABLE TO START WORK WITHIN FOUR WEEKS: REASON NOT AVAILABLE TO START WORK WITHIN FOUR WEEKS, INTENTION TO LOOK FOR WORK IN THE NEXT TWELVE MONTHS AND TYPE OF WORK PREFERRED, MARCH 1986 ('000)

<i>Reason not available to start work within four weeks</i>	<i>Intention to look for work in the next twelve months</i>					<i>Type of work preferred</i>			<i>Total</i>
	<i>Intended to look</i>	<i>Might look</i>	<i>Would not look</i>	<i>Did not know</i>	<i>Not asked(a)</i>	<i>Full-time</i>	<i>Part-time</i>	<i>No preference</i>	
Personal reasons	44.2	25.5	54.1	6.8	6.5	59.6	67.4	10.3	137.2
Own ill health, etc.	19.5	14.1	36.5	4.3	5.9	35.2	37.4	7.7	80.3
Studying	20.5	7.2	13.1	*	*	22.7	18.4	*	43.3
At school	16.4	6.1	9.8	*	*	15.8	16.7	*	34.8
Other educational institution	4.0	*	*	*	*	6.9	*	*	8.5
Moved house/holidays	4.3	4.2	4.5	*	*	*	11.6	*	13.6
Family reasons	17.5	16.8	60.2	*	6.9	11.7	87.6	5.0	104.4
Ill health of other than self	*	*	6.0	*	*	*	8.2	*	11.2
Unable to find suitable childcare	4.5	*	6.7	*	*	*	11.4	*	14.5
Children too young/preferred to look after children	10.6	12.1	47.6	*	6.1	6.9	68.0	*	78.6
Other reasons	4.2	*	11.5	*	*	5.4	13.4	*	19.8
Total	65.8	44.8	125.9	10.8	14.1	76.6	168.5	16.4	261.4
Males	20.7	12.4	24.3	*	*	37.9	20.6	5.9	64.4
Females	45.1	32.4	101.6	7.0	10.9	38.7	147.9	10.4	197.0

(a) Persons who had a job but, up to the end of the survey week, had been away from work without pay for four weeks or longer and had not been actively looking for work.

